

INCREMENTAL DATA PROCESSING SOFTWARE ESTRUDAT PROCESSING

User Manual

SIN

SIM STRUMENTI SNC
Via Palestro 15
20013 MAGENTA (MI)
Tel +39 02 97003039
Fax +39 02 97270167
www.simstrumenti.com
sim@simstrumenti.com



ESTRUDAT PROCESSING – User manual

Index

Software

Installation.....	2
Start.....	7
Control Panel.....	7
Header.....	8
Import.....	9
Constant Tube.....	10
File.....	12
Process.....	14
Save.....	14
Print.....	16
Graphs.....	17
Scale.....	18
X.....	19
New.....	19
About.....	20
Help.....	20

Appendix

Notes.....	26
------------	----



SOFTWARE

The program **ESTRUDAT PROCESSING** is used to set the data acquisition system and to download the recorded data.

INSTALLATION:

The program **ESTRUDAT PROCESSING** is stored into a CD.

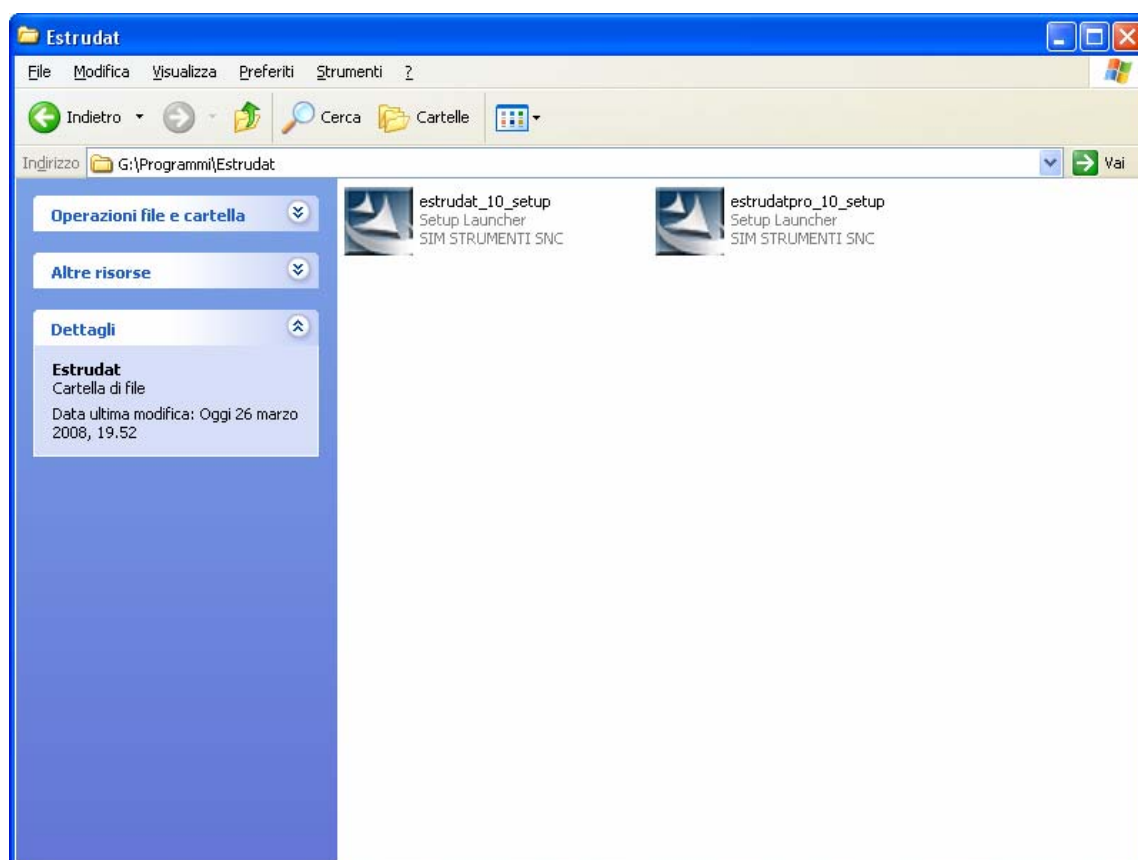
To start the installation click:

Start

My computer

ESTRUDAT PROCESSING (D:)

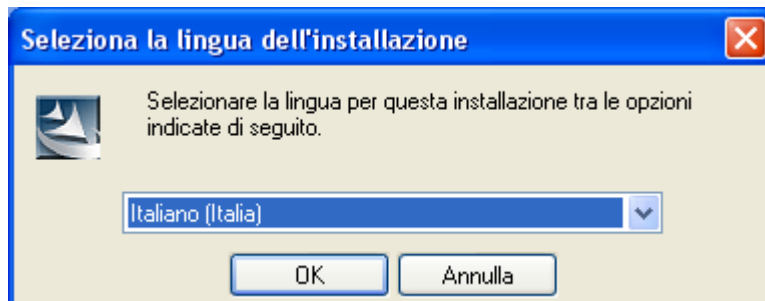
In the CD two files can be found, click twice on **estrudat_pro_setup** (pic. 1)



pic. 1

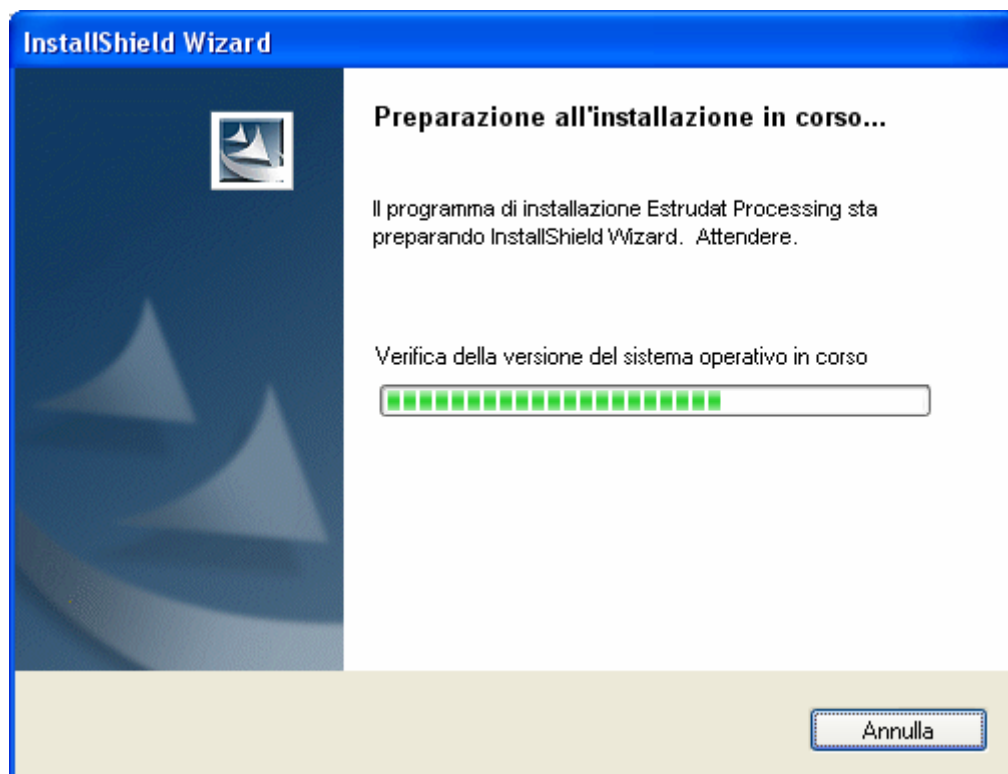


A window will open (pic. 2) where the language can be selected, press **OK** to continue.



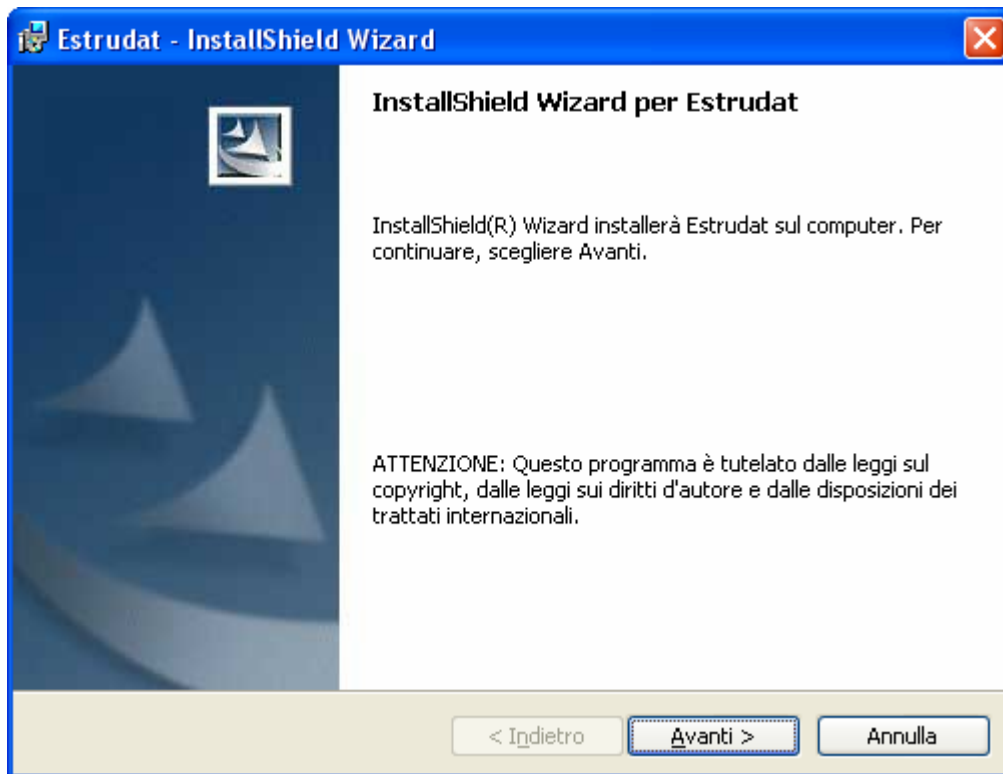
pic. 2

The install window will follow (pic. 3).



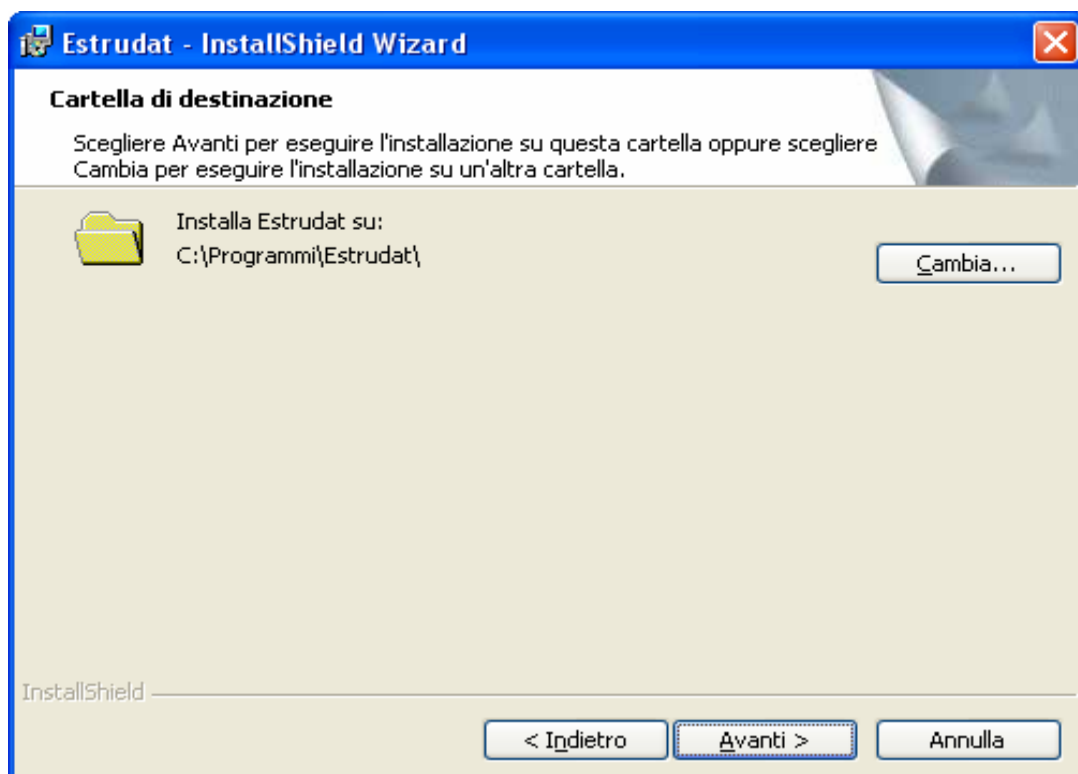
pic. 3

Press **Next** (pic. 4) to continue the installation or press **Cancel** to stop.



pic. 4

By clicking **Next** a communication window will be displayed (pic. 5) where the local directory (where the program is installed) can be changed/chosen.

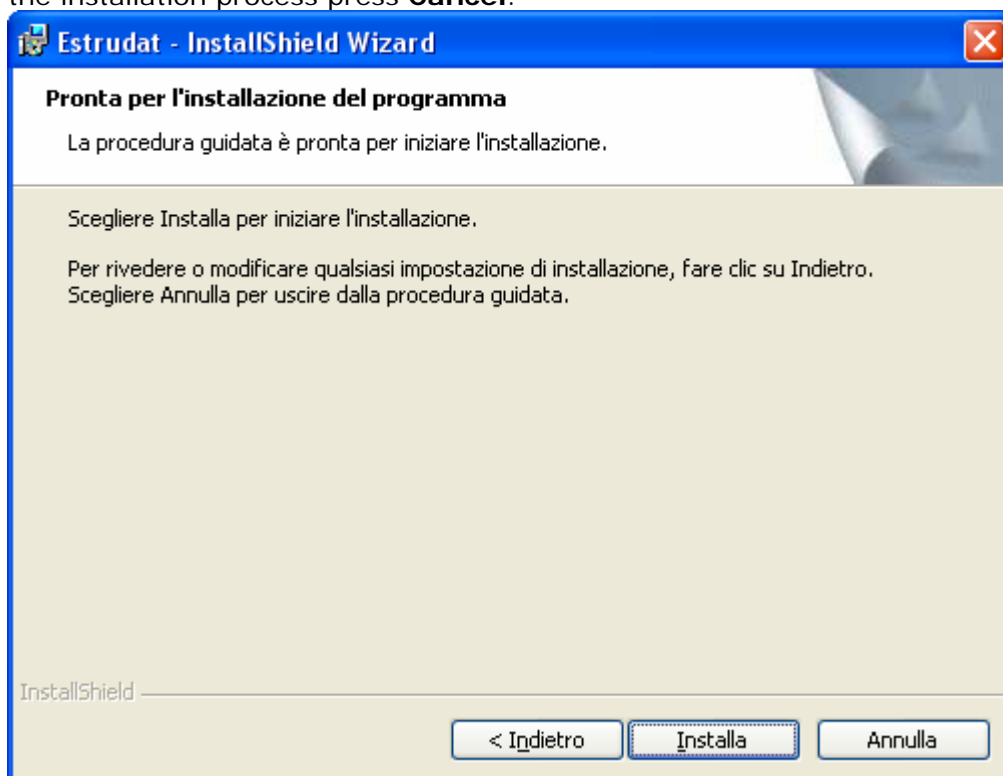


pic. 5

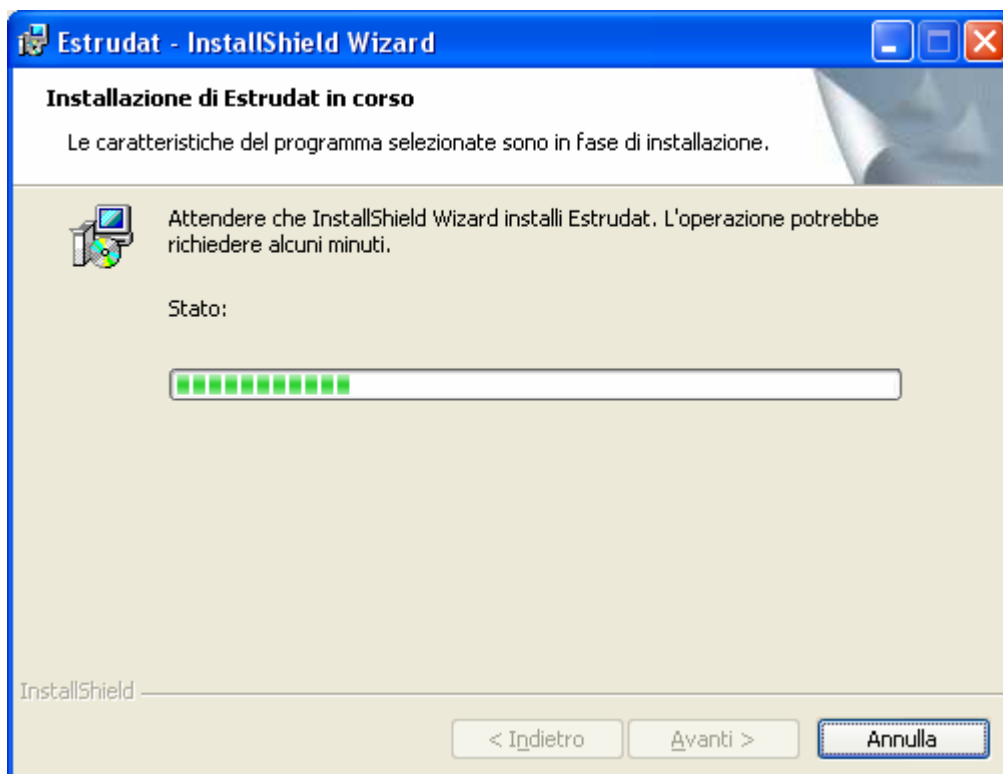
By pressing **Next** (pic. 5) another window will pop up (pic. 6); press **Install** to install the program in the directory previously chosen.



During installation of the files a window with a progress bar is visible (pic. 7). To stop the installation process press **Cancel**.



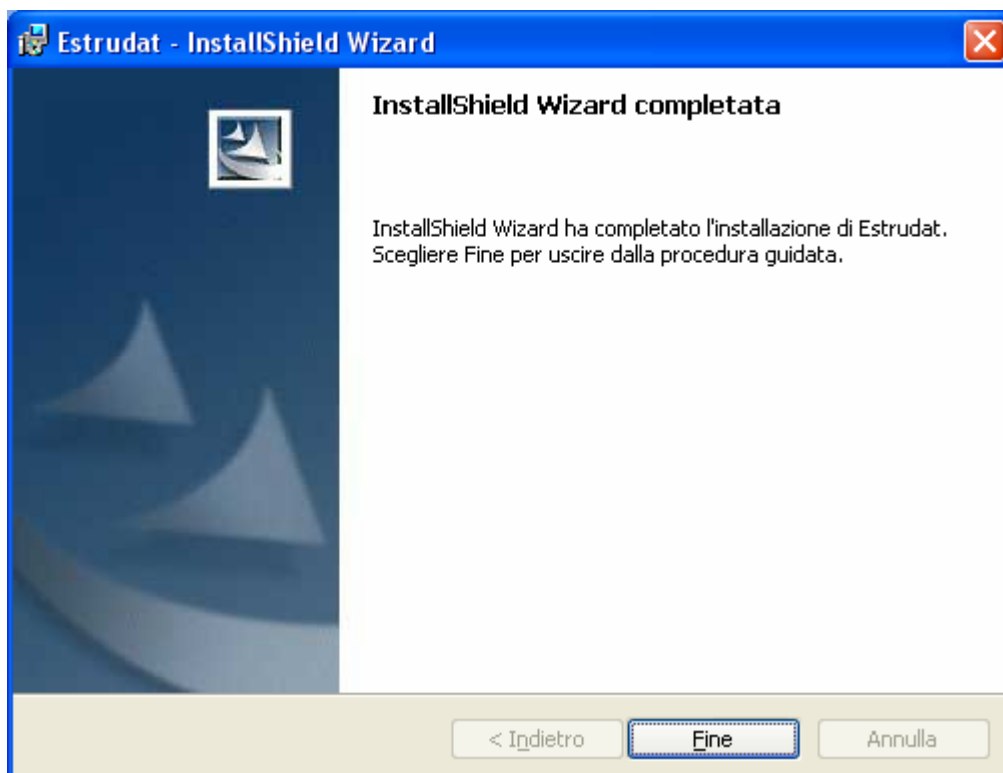
pic. 6



pic. 7



At the end of the installation the final window is shown (pic. 8).

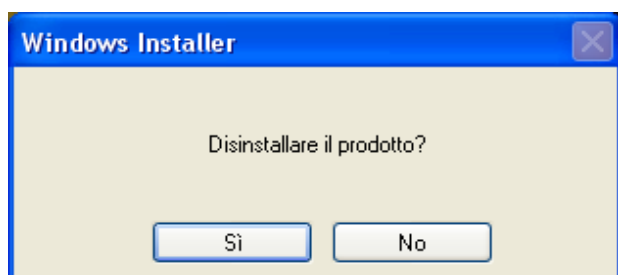


pic. 7a

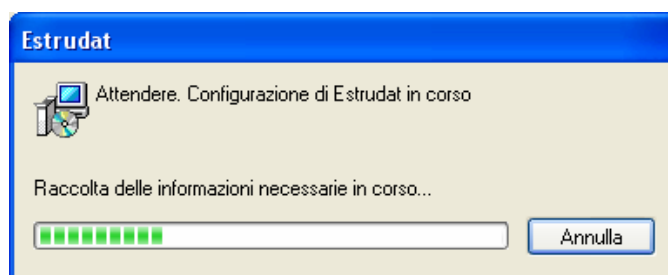
UNINSTALL:

During installation an uninstallation program was inserted, which can be launched by clicking **Uninstall ESTRUDAT PROCESING**. To run it press:

START ▶ PROGRAMS ▶ MINILOG ▶ UNINSTALL ESTRUDAT PROCESING



pic. 9



pic. 10

For the program uninstall a window is displayed (pic. 9). Click **Yes**, to start removing all files, a window with a progress bar is visible (pic. 10).

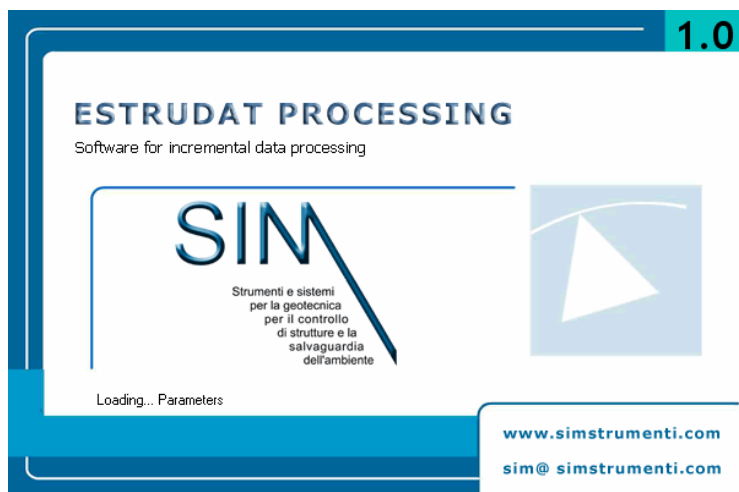


THE PROGRAM:

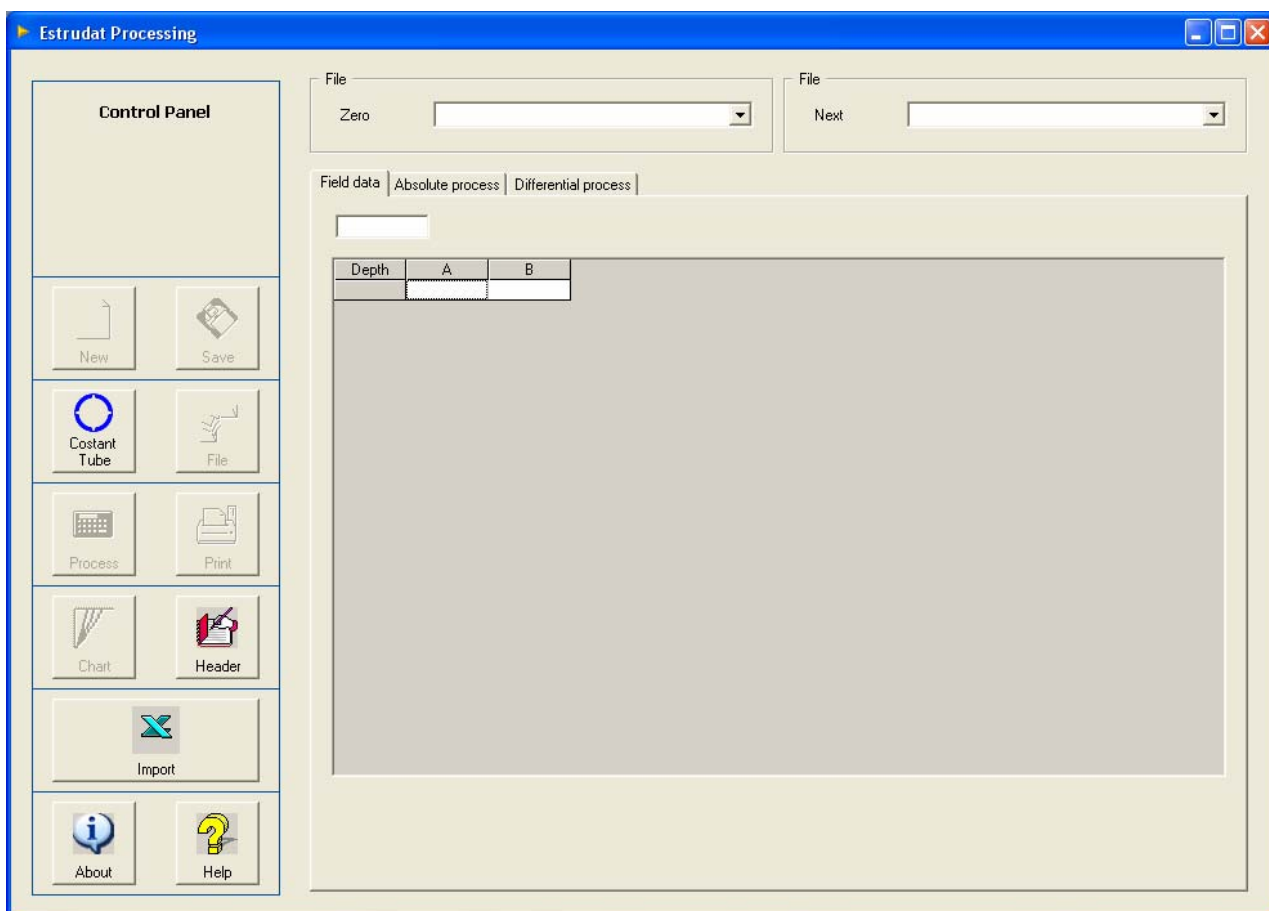
To start the application click **ESTRUDAT PROCESSING**.

START ➔ **PROGRAMS** ➔ **ESTRUDAT** ➔ **ESTRUDAT PROCESSING**

While the applications is loading a splash screen is visible (pic.8) followed by the main program window (pic.9).



pic. 8



pic. 9



On the left side of the window is collocated the control panel where are located the function buttons:

- | | | | |
|---|----------------------|---|---------------|
| ▶ | New | ▶ | Save |
| ▶ | Constant Tube | ▶ | File |
| ▶ | Process | ▶ | Print |
| ▶ | Chart | ▶ | Header |
| ▶ | Import | | |
| ▶ | About | ▶ | Help |

In the central part is located the screen where the data are displayed:

- ▶ **Field Data**
- ▶ **Absolute process**
- ▶ **Differential process**

To switch between one position to the others, press on the relative tab.
In the above text fields are written the loaded files where can be shown the file selected as zero (reference) and the file selected to be displayed.

Header

By clicking the button **HEADER** a window will load (pic.11) where the user can insert two lines that will appear on every print out of data and graphs.

Header

Insert the text that you wish to write in the upper part of the page.

Company: SIM STRUMENTI SNC

Address: Via Palestro 15 - 20013 - Magenta(MI)

Close

pic. 11



The text inserted will be memorized in order to avoid to insert thus text every time. Press the button **CLOSE** to exit from this window.

Import

Configuration Excel file:

To import data from an Excel file, the data must be in conformity to the **ESTRUDAT** rules, because the program will make a control on the name and the data inside the file, in order to avoid to import on the same tube different data.

In Excel the data must be entered in the following format:

- ▶ The reference sensor in the column **A**
- ▶ The measurement sensor on the column **B**

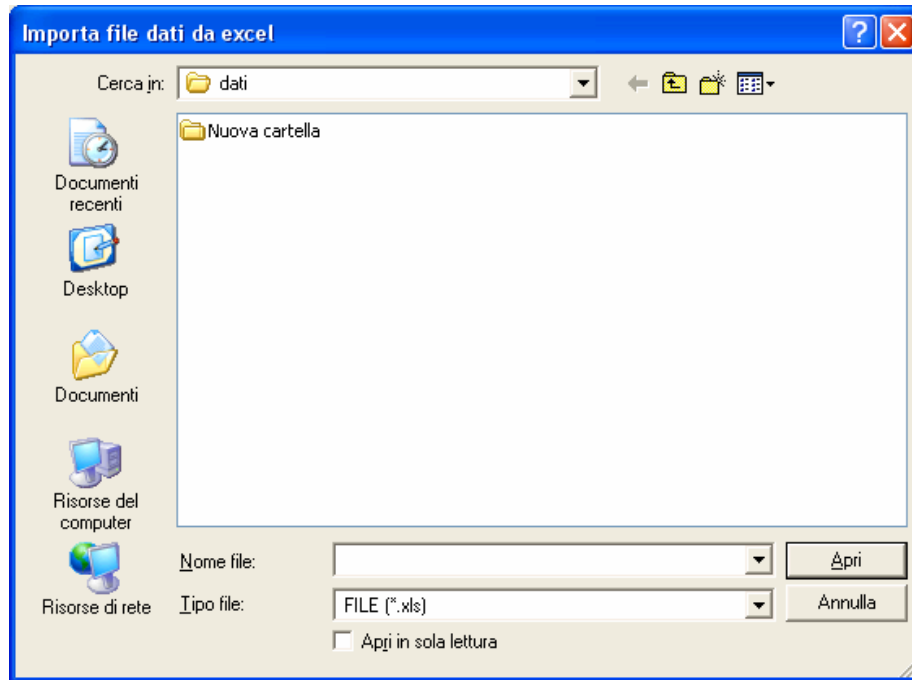
As explained in the ESTRUDAT MANAGER user manual (see paragraph Data Download), for each measurement the program will create two files, therefore the software will create for each excel imported file two files compatible with the ESTRUDAT software.

By pressing the button **IMPORT** a window will be loaded (pic.12) where it will be possible to insert the data for the relative tube. The data can be inserted manually or by opening a preexisting constant file.

By pressing the button **Save**, the file name will appear in the upper text field of the window (the file will have the name as follows: customer name + site name + tube name + reading number). **Please be careful not to create for different tubes files with the same name.**

pic. 12

At this point it's possible to press the button **IMPORT**, a dialog window will appear (pic.13) where it will be possible to choose the excel file to be imported.



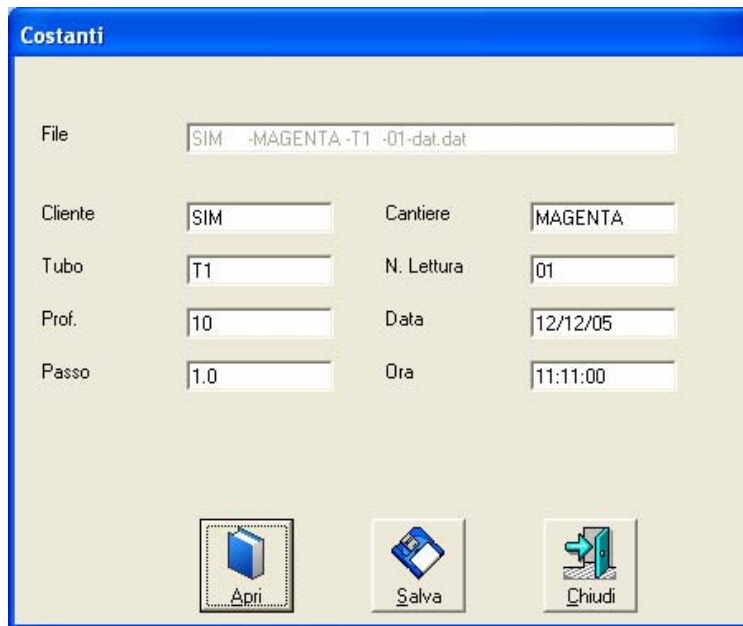
pic. 13

The name of the file imported will be the same as the constant one, but with a different extension, the constant file will be **dat** and the one with the readings will be **num**.

Click **Close** to end the **IMPORT** procedure.

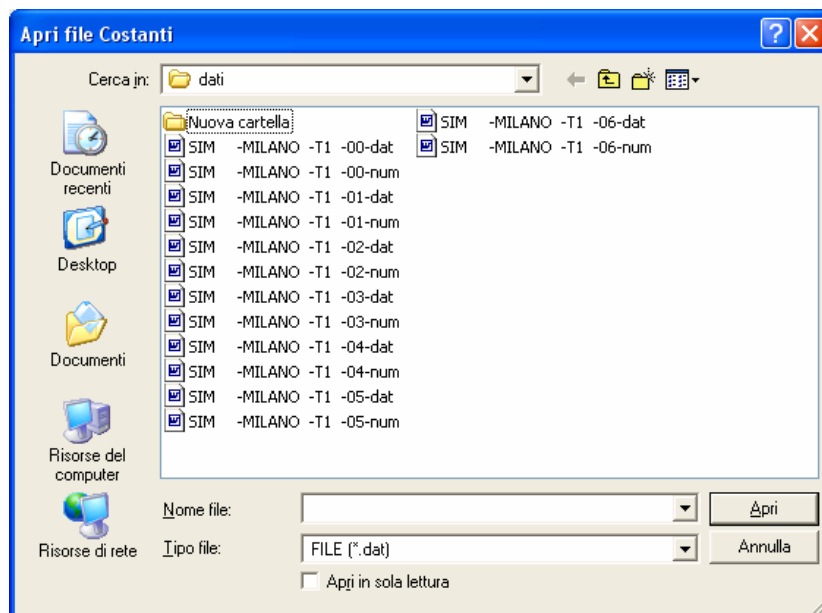
Tube Constants

To start the data process it will be necessary first to load the field data. The button **FILE** is deactivated until the a constants file will be opened that will be a reference file (it's possible to load up to 7 files simultaneously). To load the constants file click on the button **CONSTANTS** and a window will open (fig.19).



pic. 19

By pressing **Open** it will open a dialog window (fig.20) where the file can be opened.

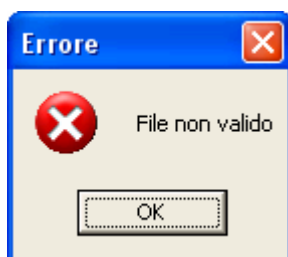


pic. 20

The file to open must be of the type:

▶ **CUSTOMER – SITE – TUBE - READING N. - DAT**

In case we will try to load a different type of file the program will show an error message (pic.21).

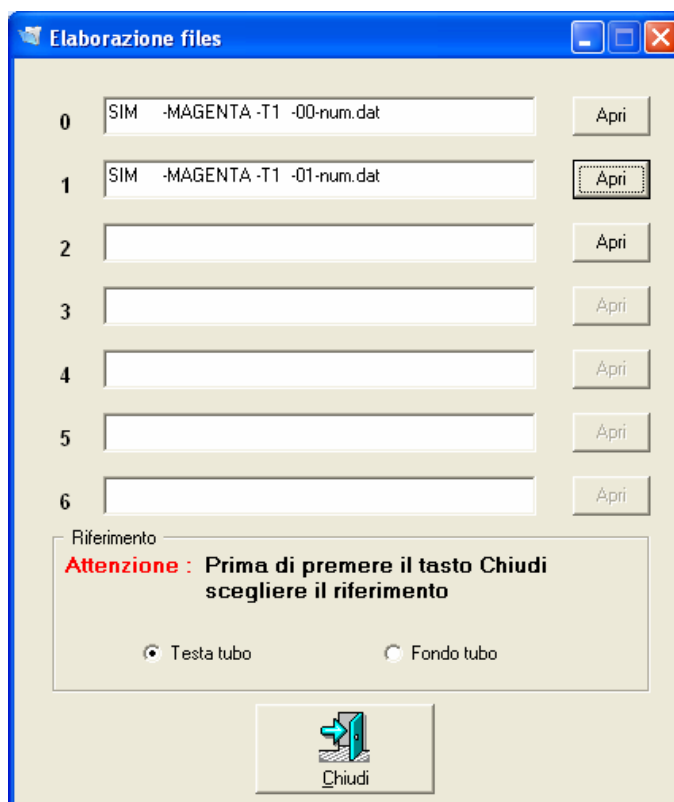


pic. 21

After loading the file it will be possible to change and save it. Click **Close** to terminate the procedure.

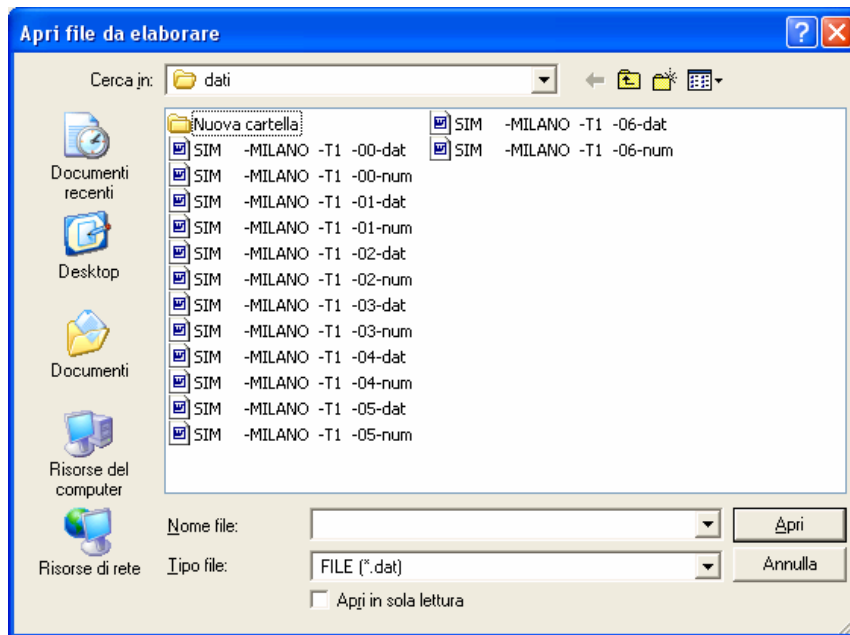
File

By pressing the **File** button a window will open where it will be possible to load up to 7 field data files from the same tube (fig. 22).



pic. 22

Press **Open** to load the files, it will open a dialog window (pic. 23).

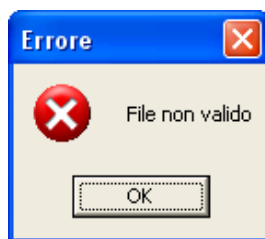


pic. 23

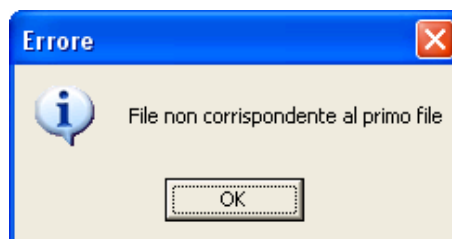
The file to open must be of the type:

▶ **CUSTOMER – SITE – TUBE - READING N. – NUM**

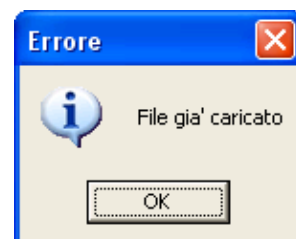
In case we will try to load a different file for the constants we will receive the following error messages (pics.24,25,26):



pic. 24



pic. 25



pic. 26

Once all the files are loaded press **Close**.

In the reference frame must be chosen if we would like to process the data from bottom to head or vice versa. This is very important if the tube depth changes between the measurements.

EXAMPLE:

For a tube inserted horizontally in a tunnel face where the tube is being broken while the face is forwarding, we will have to choose **BOTTOM**. In case of a vertical tube, if the probe cannot penetrate after the first measurement, we will choose **HEAD**.



Process

By pressing the **Process** button the program will process all loaded files in reference to the file selected in the upper combo box named ZERO. In case a ZERO file is not selected, an error message will be displayed (pic.28).



pic. 28

To show the data in the grid select one from the combo box named NEXT.

If requested it's possible to change the zero file by selecting another from the list and press Process to recalculate.

Once the data processing is done the buttons **GRAPH** and **PRINT** will be enabled.

To modify a number in the field data, click on the number in the grid and change it in the upper text field. To change the all column by an offset value, click twice on the column, a window will appear where it would be possible to type a number. Press **Ok** to accept, **Close** to exit without saving (pic.29).

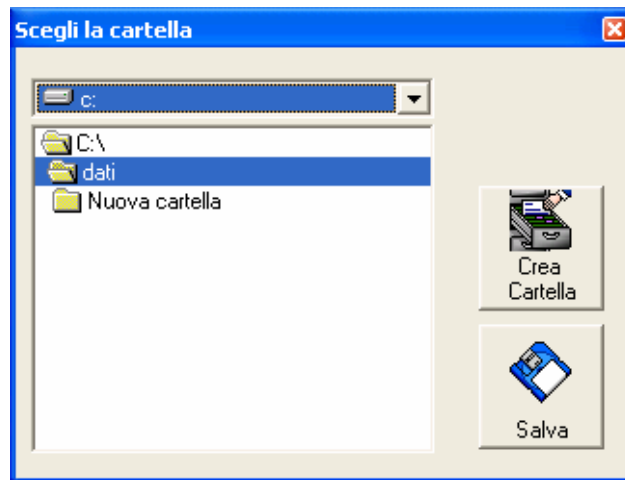


pic. 29

Save

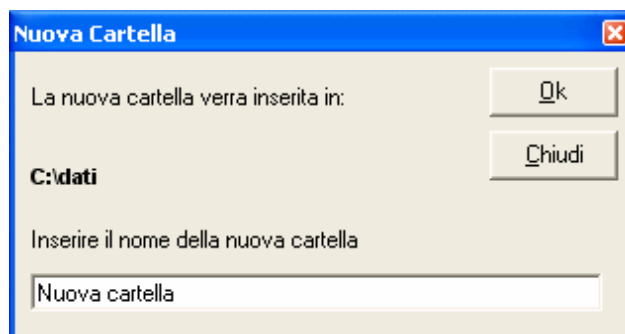
The field data can be change before and after the processing. It's possible to save any changes by pressing the button **Save**.

A dialog window will appear (pic.30) where the path can be changed.



pic. 30

By clicking New Folder a window (pic.31) will pop up where we could choose the name and the path where to create a folder.



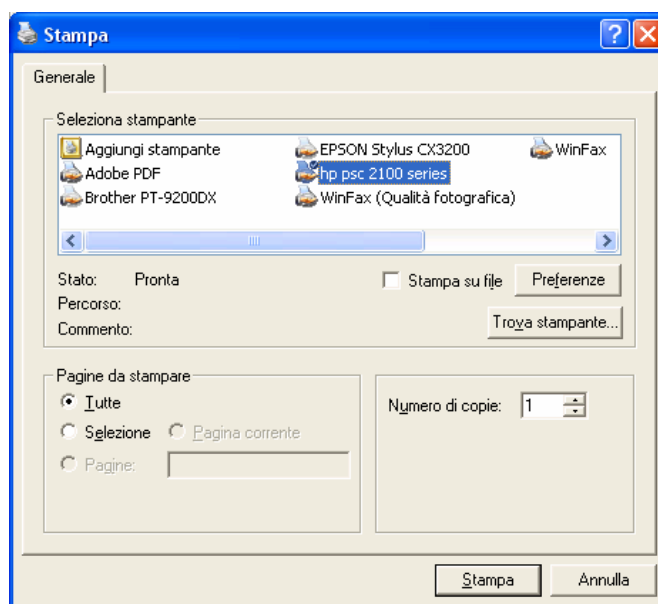
pic. 31

By pressing **OK** the folder will be created, and press **Close** to exit without creating the folder.



Print

By pressing the button **Print** a dialog window will open (fig.32) where the print can be selected, and press **Close** to exit without printing.



pic. 32

Clicking Print the page will start printing the selected data.



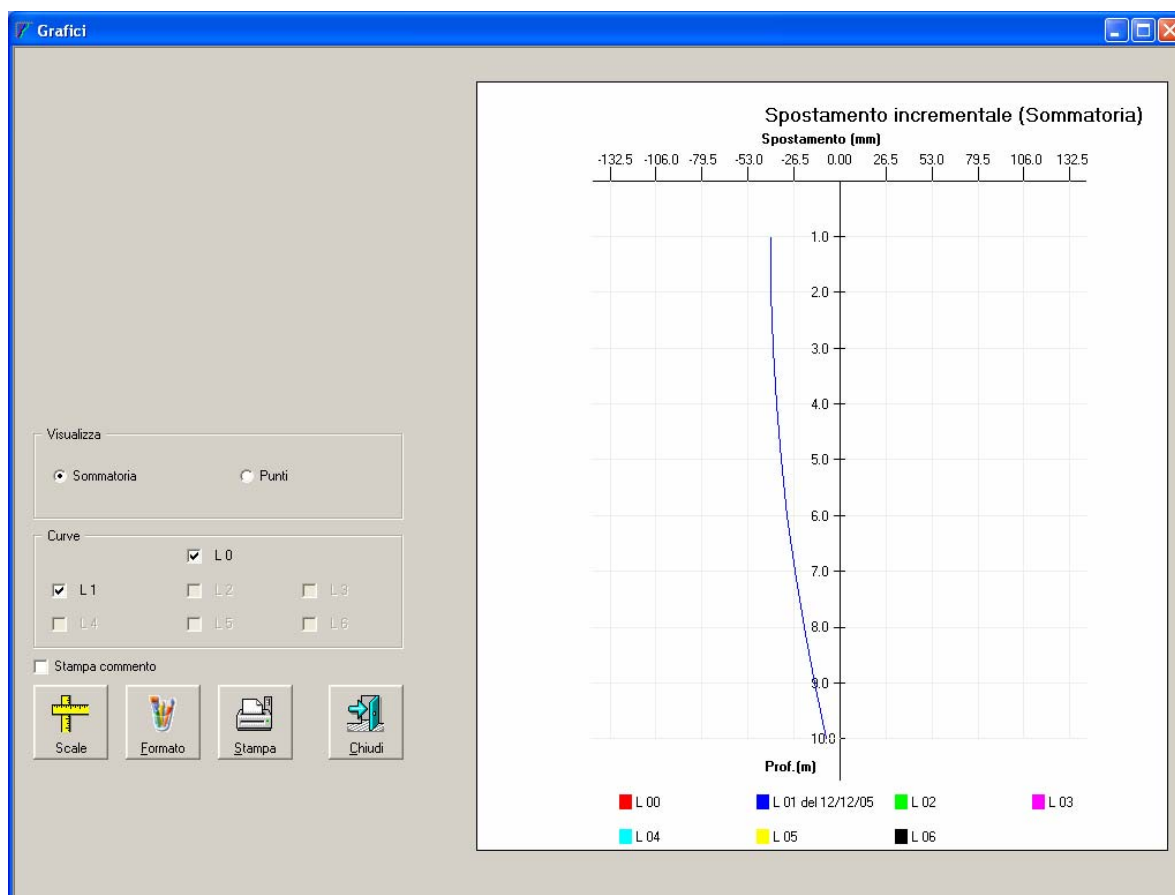
Graph

Press the button GRAPH, to start the charting procedure (pic.34).

In this graph we could choose the reading to be displayed in the chart (selecting the reading number from 00 to 07 and select the graph type).

To print the graph, press the print button, a dialog window will load (see pic.33), the printed page will be equal to the displayed one on the screen.

By pressing **Close** the graph procedure will terminate.



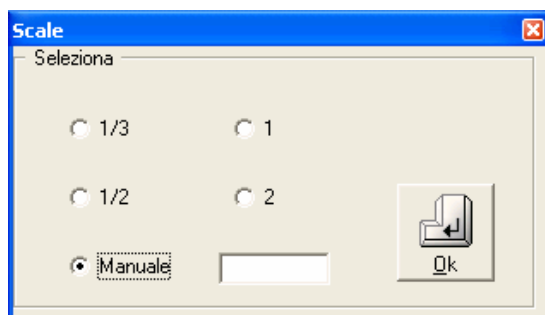
pic. 34



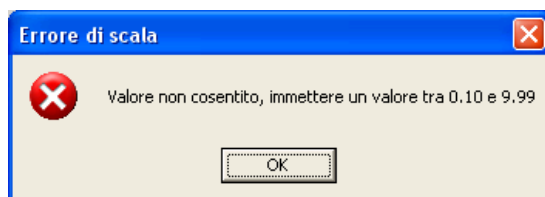
Scale

Press the button **Scale**, a dialog window will appear (pic. 36). It's possible to change the X axis (the default scale is 1 or 3 times the maximum value).

In the window there are four possible scale selectable ($\frac{1}{3}$, $\frac{1}{2}$, 1, 2) ed one that it's MANUAL (variable between 0.3 and 9.9). Select the preferred scale and press Ok to confirm. In case the values (max/min) inserted are outside the permitted range, the software will display an error message (pic. 37).



pic. 36

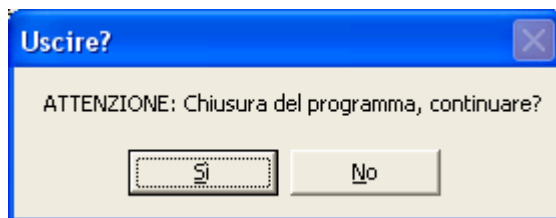


pic. 37



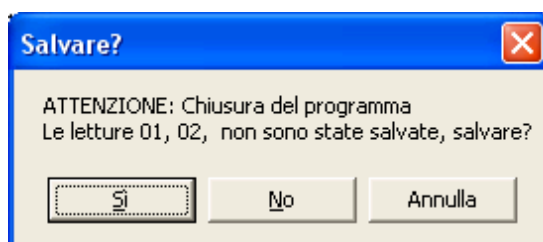
X

By pressing the button X, the program will close, displaying first the error message showing a communication message (pic.38) that will ask to confirm the exit.



pic. 38

In case on or more reading were modified without saving, the program will inform about this with a message (pic.39).



pic. 39

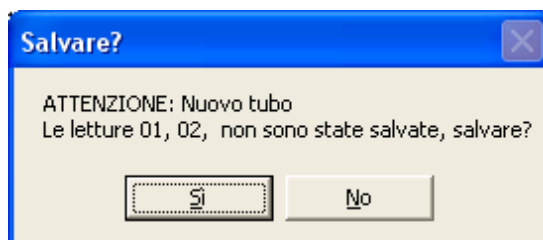
Press **Yes** to save, see also the save paragraph (pic.30)

Press **No** to exit without saving.

Press **Cancel** to cancel the exit procedure and remain in the program.

New

Press the button **New** to reset the grid and the program in order to start another data processing of a new tube. In case on or more reading were modified without saving, the program will inform about this with a message (pic.40).



pic. 40

Press **Yes** to save the files and then to reset.

Press **No** to reset the program without saving.



About

By pressing **About** a window will appear (pic.41) with all SIM data and in addition the software version, needed for support reasons.



pic. 41

Help

By pressing the **Help** button the program will load the user manual opened as an Acrobat file.



NOTES



Empty rectangular box for a title or header.

NOTES

Large rectangular area with horizontal lines for writing notes.

