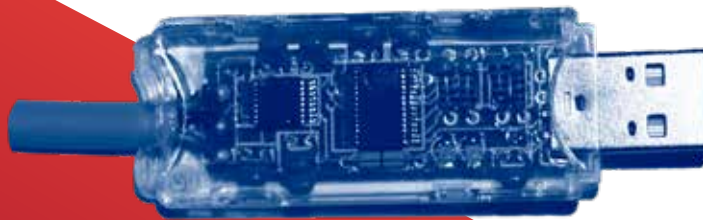




USER MANUAL

USB Converter



Index

1	Introduction	2
2	Installation on Windows XP	3
3	Installation on Windows Vista	5
4	Installation on Windows 7	6
5	Installation on Windows 8 or 10	8
6	Driver Installation	9
7	Reinstalling the Driver	12
8	Change COM port	13
9	Connection with VEDO software	15

Introduction

1

If your computer does not recognize the driver or the USB converter does not work properly, proceed with the driver installation.

The driver can be found on the USB Flash Drive or on the CD provided by SIM STRUMENTI, or you can also download it from the website:

http://www.simstrumenti.com/software/Driver_FTDI.zip

If you download the folder from the site, extract the folder (.ZIP) and save it unzipped.

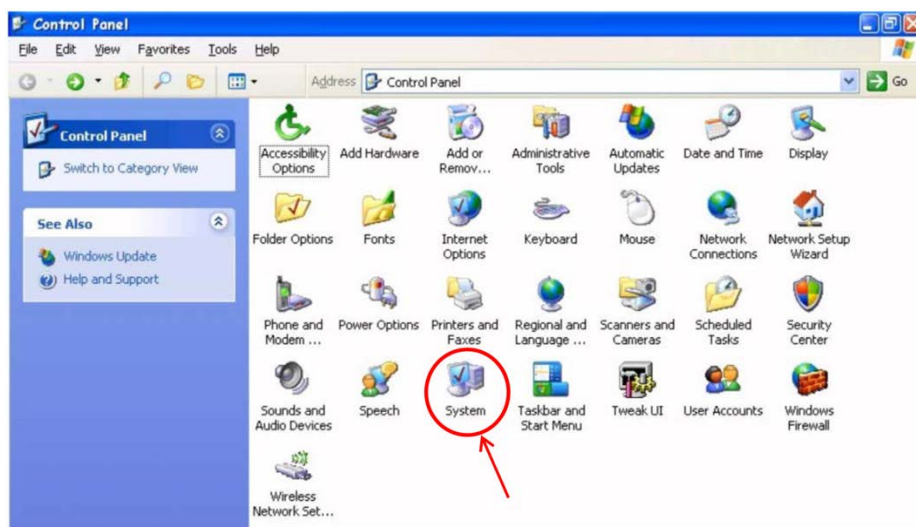


Installation on Windows XP

2

Press **START** and then **Control Panel**.

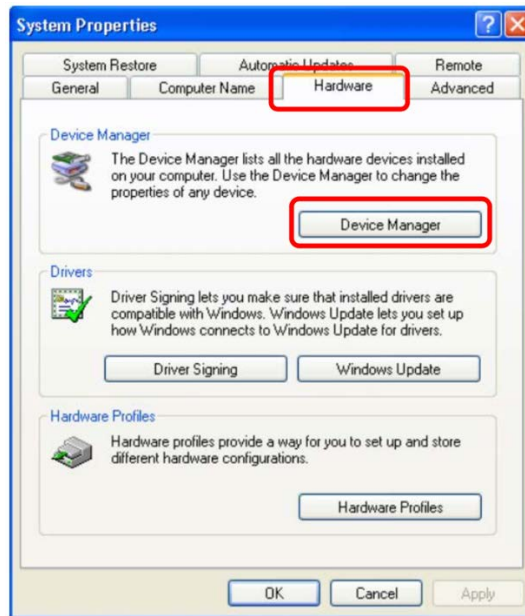
A window will appear with the icons relative to the Control Panel (img.1), then click on the **System** icon (img.1).



img.1

In the new window (img.2) **System Properties**, click on the **Hardware** sub-window and then click on the **Device Manager** icon.





img.2

A window relating to the computer's devices will appear (img.9 - from here proceed with [step 6 - Driver Installation](#)).



Installation on Windows Vista

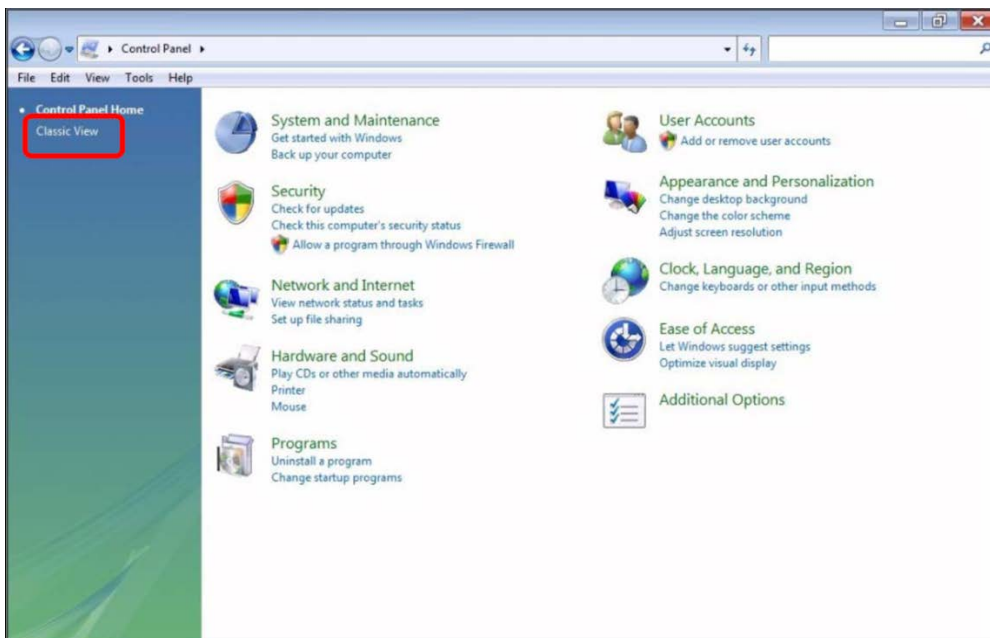
3

Click on the icon



and then on the **Control Panel**.

If a window appears as in img.3, choose the option **Classic View** so that a window appears with all the icons of the control panel elements, as in img.1.



img.3

Then click on the **Device Manager** icon.

From here proceed with [step 6 - Driver Installation](#).

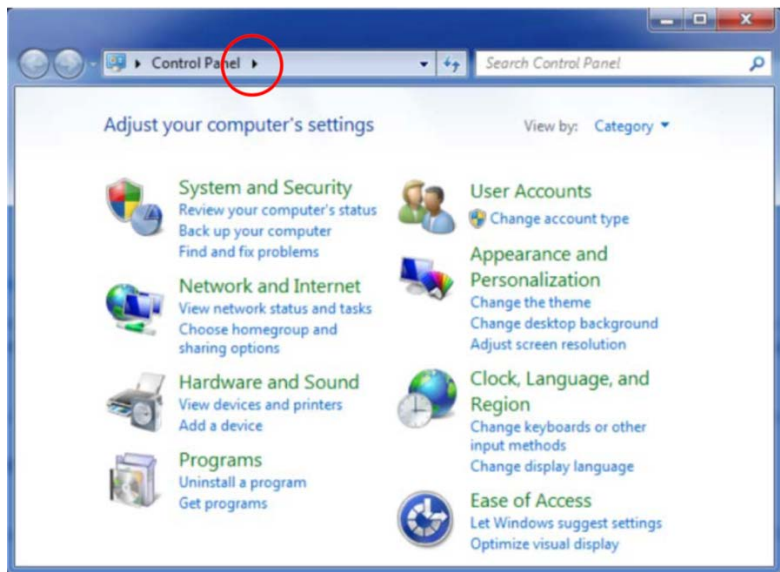


Installation on Windows 7

Click on the icon

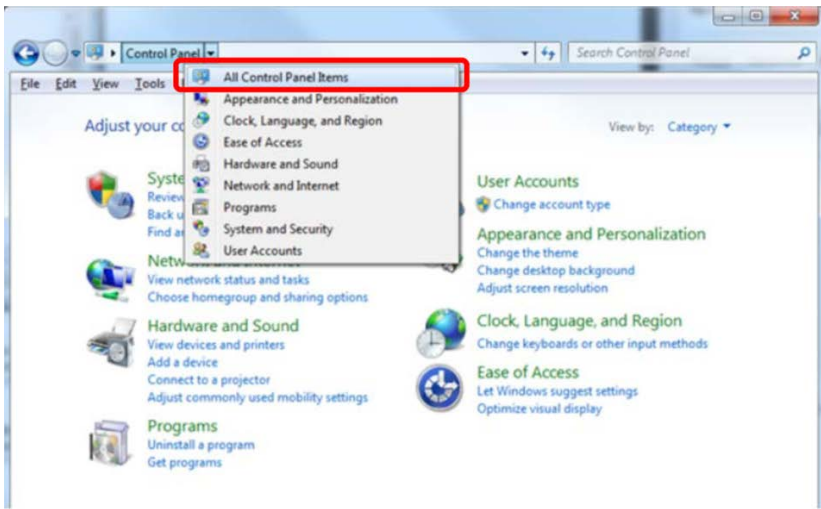


and then on the **Control Panel**.



img.4

If a window appears as in img.4, click on the arrow (marked with the red circle) to the right of the **Control Panel** item in the top bar of the window (img.5).

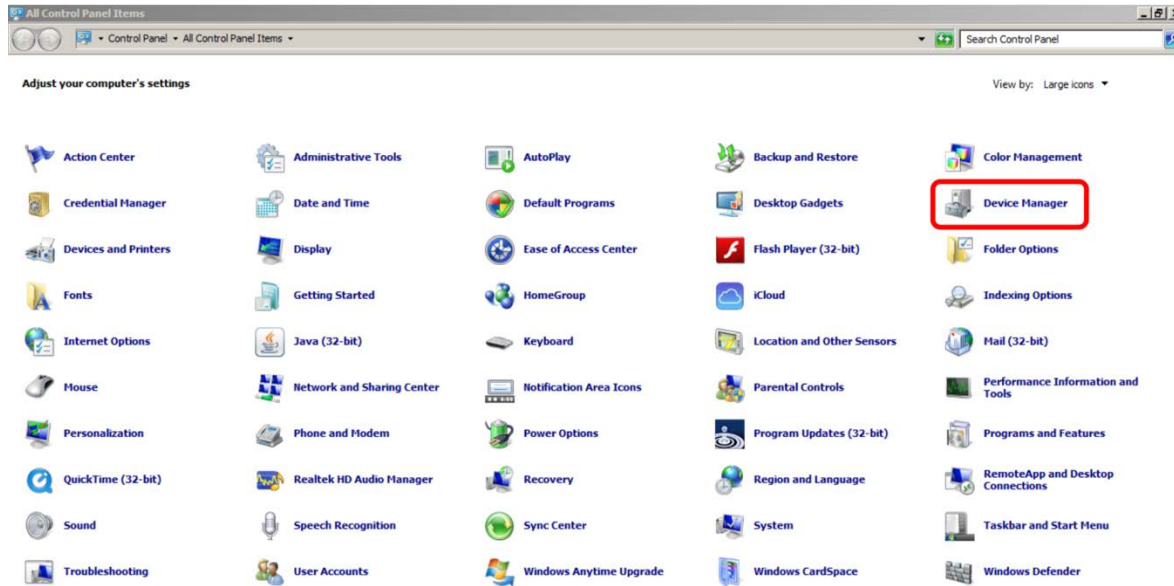


img.5



When the drop-down menu (img.5) appears, choose the option **All Control Panel Items**.

In the next window choose the option **Device Manager** (img.6).



img.6

From here proceed with [step 6 - Driver Installation](#).



Installation on Windows 8 or 10

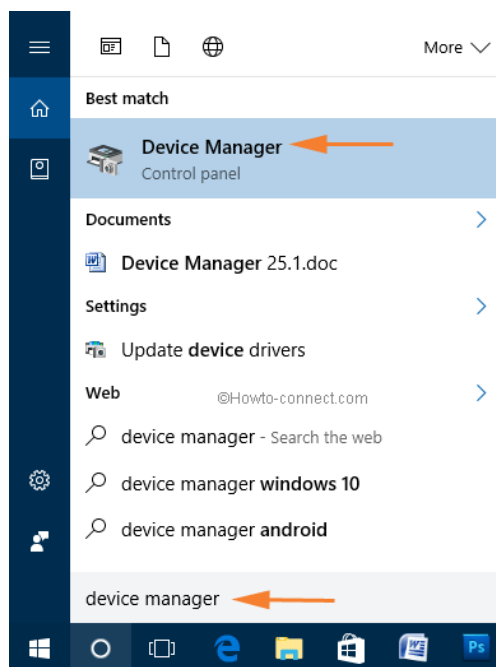
5

Click on the magnifying glass icon  (img.7).



img.7

In the opened text box, write *Device Manager* and select the result that will take you to the Device Manager page (img.8).



img.8

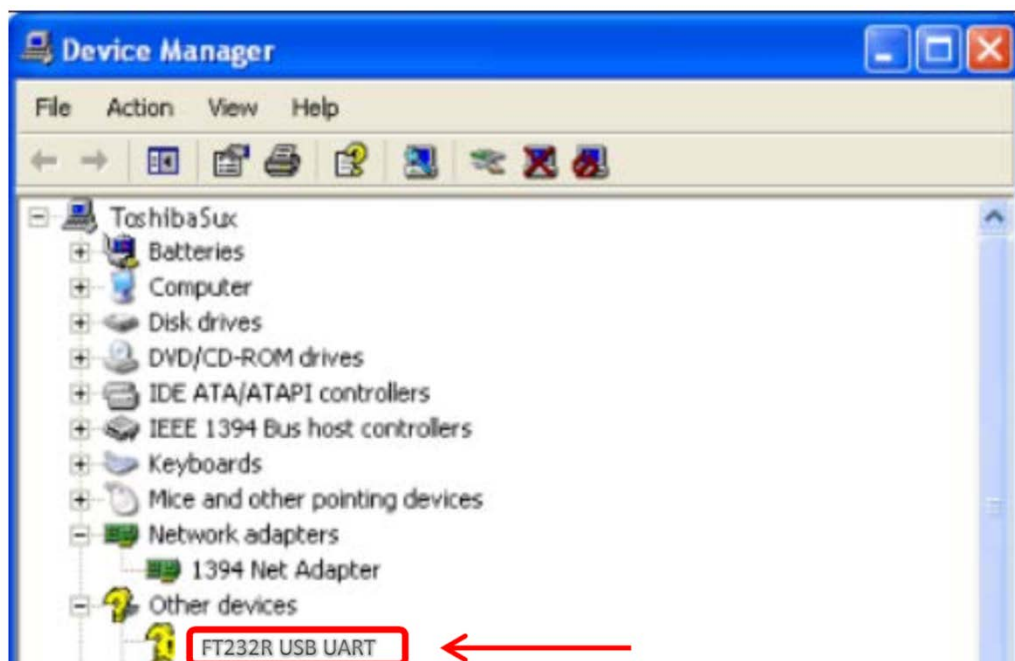
From here proceed with [step 6 - Driver Installation](#).



Driver Installation

6

To proceed with the installation of the driver, check that you have arrived at the window Device Manager (img.9).



img.9

If the item **FT232R USB UART** (img.9) is associated with a yellow triangle with an exclamation mark inside, or with a yellow question mark: right-click on the item **FT232R USB UART** and in the drop-down menu that appears, choose the item **Update Driver Software...** If the item **FT232R USB UART** does not appear or is not marked as an error, continue with the reinstallation procedure described in [step 7](#).

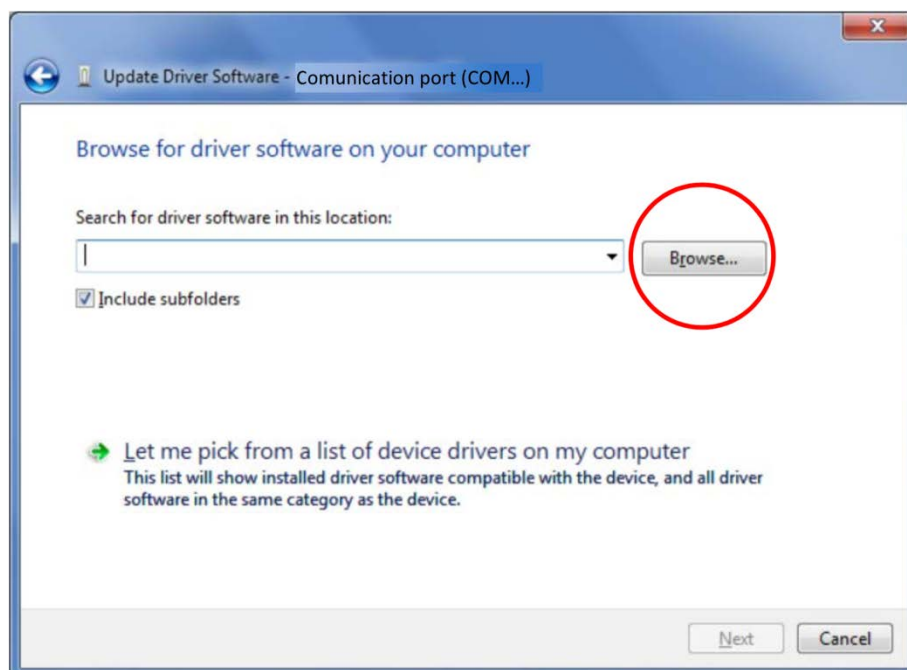




img.10

In the **Hardware Update Wizard** window choose “Install from a list or specific location” option and then click the **Next** button.

In the next window **Browse for driver software on your computer** (img.11) press the **Browse** button.



img.11

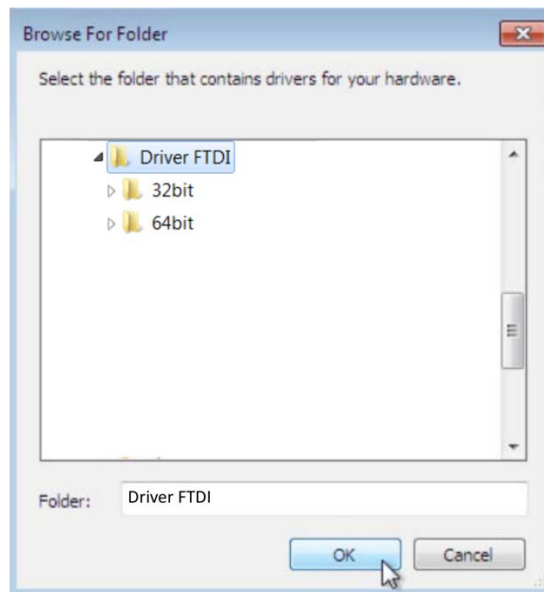


In the **Browse for folder** window (img.12) search for the **Driver FTDI** folder and click once on the **32bit** or **64bit** folder (depending on whether the computer you are working on) and then press **OK**.



WARNING

Do not open the 32bit and/or 64bit folders otherwise, the computer will not find the desired files and will give you a driver not found error message.



img.12

After installation, you need to disconnect and reconnect the USB converter. Try (see [step 9](#) or use the readout unit user manual) to communicate with the data acquisition unit (MINILOG, MYLOG etc..).

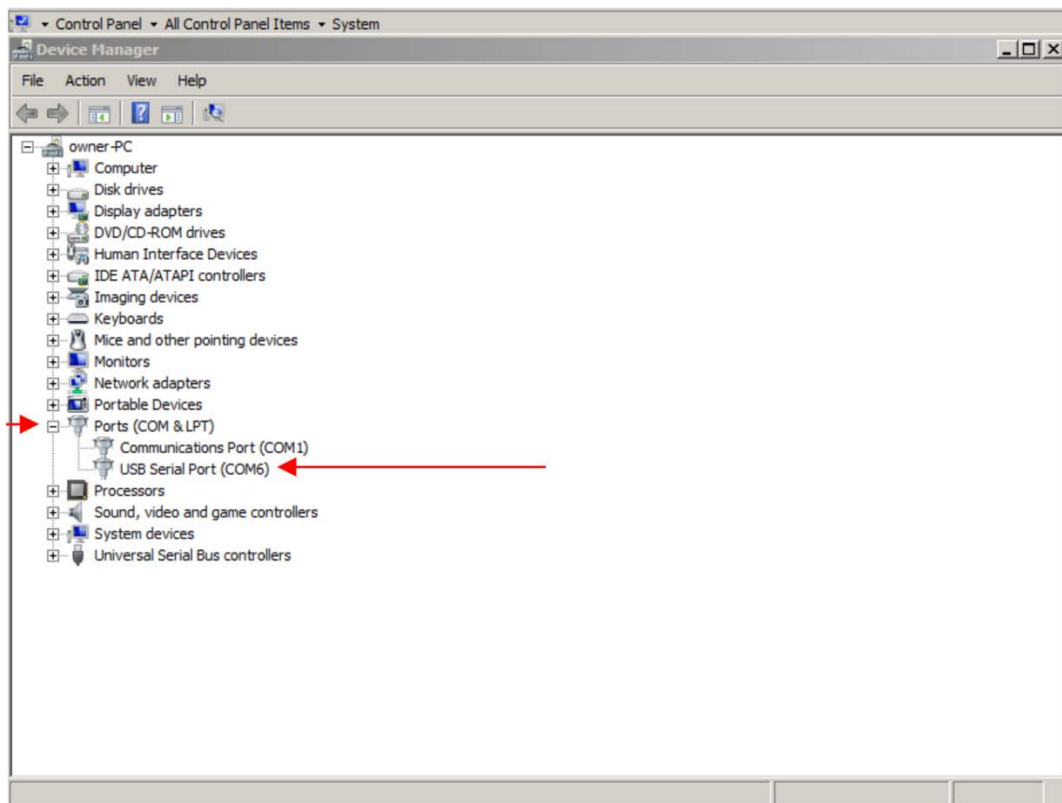
If you are unable to communicate with the devices or the computer does not recognize the device, proceed with reinstalling the driver ([step 7](#)).



Reinstalling the Driver

7

You may need to install the driver again. Make sure that the USB converter is inserted and check in the window **Device manager** (img.13), if there is the item **Port (COM & LPT)**, open it by clicking on the arrow next to it: the item **USB Serial Port (COM..)** should appear. Right-click on it: a drop-down menu will appear, choose either **Update Driver Software...** or **Properties**, then choose the **Driver** sub window, and press the **Update driver** button. Continue from [step 6](#) from **Hardware Update Wizard**.



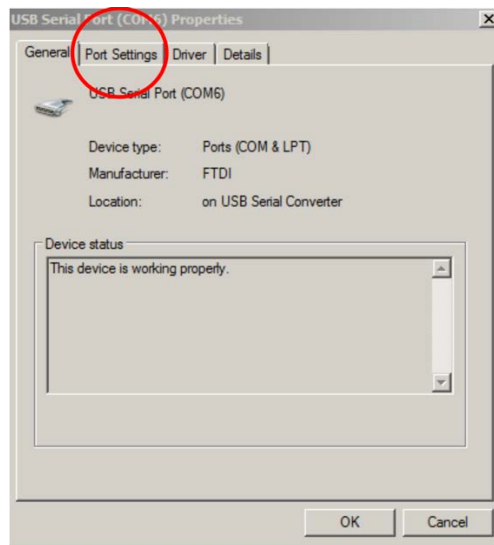
img.13



Change COM port

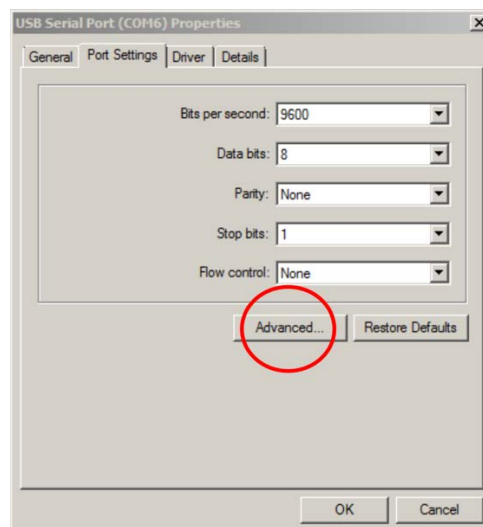
8

If you want to change the COM port (for example in the INCLAB program the available ports are only from COM1 to COM4) proceed as follows:
Right-click on the **USB Serial Port (COM..)** in the drop-down menu, select **Properties** and then choose the sub-window **Port Settings** (img.14).



img.14

In the next window (img.15) click on the **Advanced** button.

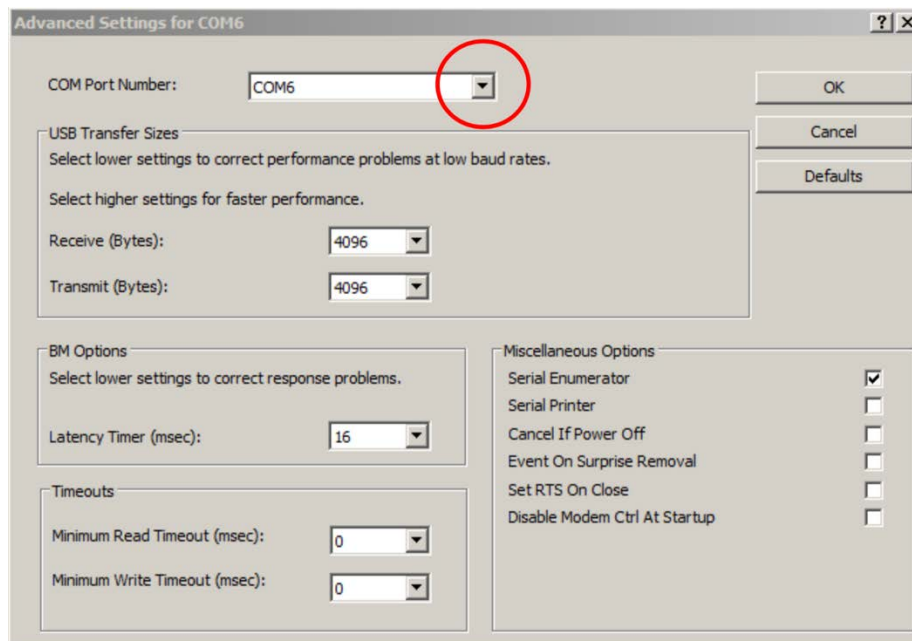


img.15



In the next window **Advanced settings for COM(..)** (img.16) click on the arrow (marked with the red circle) relative to the item **COM port number**.

A drop-down menu will open where you can choose the desired port.



img.16



IMPORTANT

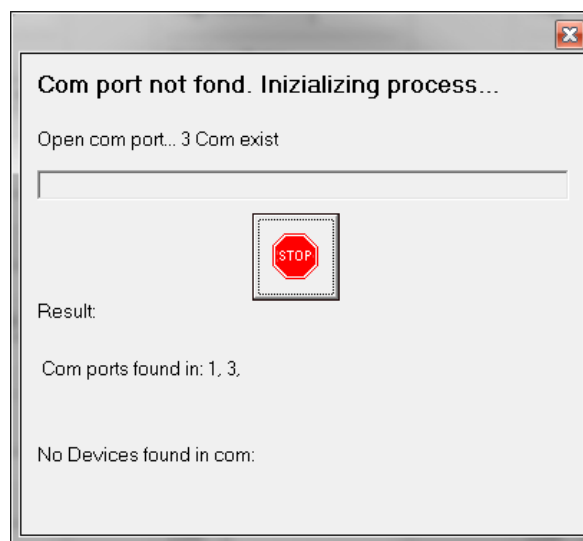
After reinstalling and/or changing the port, remember to disconnect and reconnect the USB converter before starting the VEDO software



Connection with VEDO software

When connecting to the VEDO program for the first time, all available COM ports will be automatically found and the system will try to connect to the connected device. If the connection is successful, the COM port will be stored as the default port. If the device is not found, the program will store the last COM port found as the default port (img.17).

You can search again for the COM port at any time by pressing the **Search** button in the **Communication port** section.



img. 17



WARNING

Remember to always connect the converter first and only then start the program.





Sim Strumenti S.n.c.

Via Merendi 42
20010 CORNAREDO (MI)
ITALY
Tel: +39 02 9700 30 39
Fax: +39 02 9729 01 67
www.simstrumenti.com
sim@simstrumenti.com