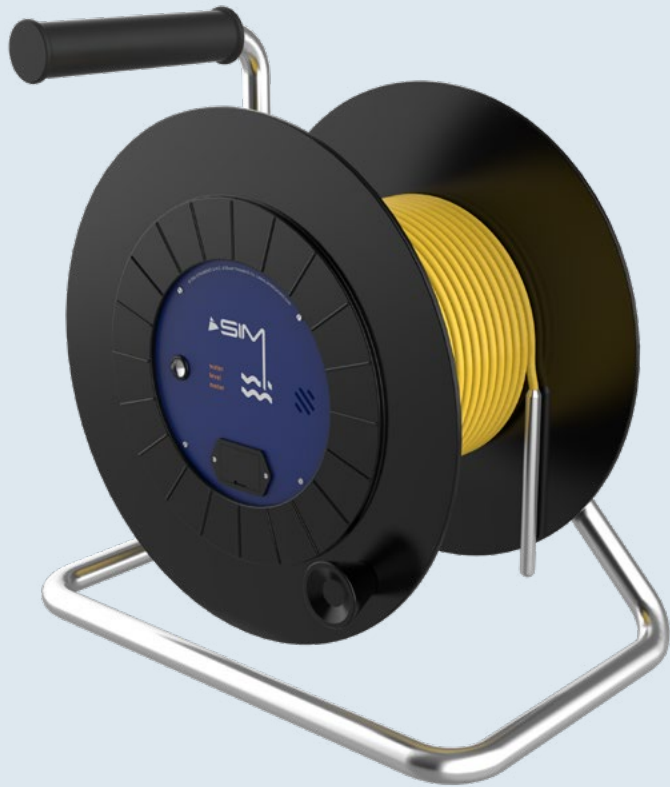


LV620

Water level meter



Description

In order to ease the level measurement in wells and piezometric holes etc., SIM has developed the water level meter LV620, compact, portable and lightweight. The water meter consist of a graduated cable (every centimeter), mounted on a reel and a probe, which after making a contact with the water closes an internal circuit mounted in the central part of the reel. The probe has a diameter of 12 cm, and it can be used with all piezometric tubes of normal use. The probe, as already mentioned, closes an internal circuit, which has an acoustic and a visual signal, mounted in the central part of the cable reel, supplied by a 9V battery, also mounted in the reel. The measurement is done by reading the cable mark, at the time of the activation of the signals. The cable is to be referred to the head tube. SIM supplies upon request a temperature sensor placed in the probe, with a digital display, also place in the central part of the cable reel.

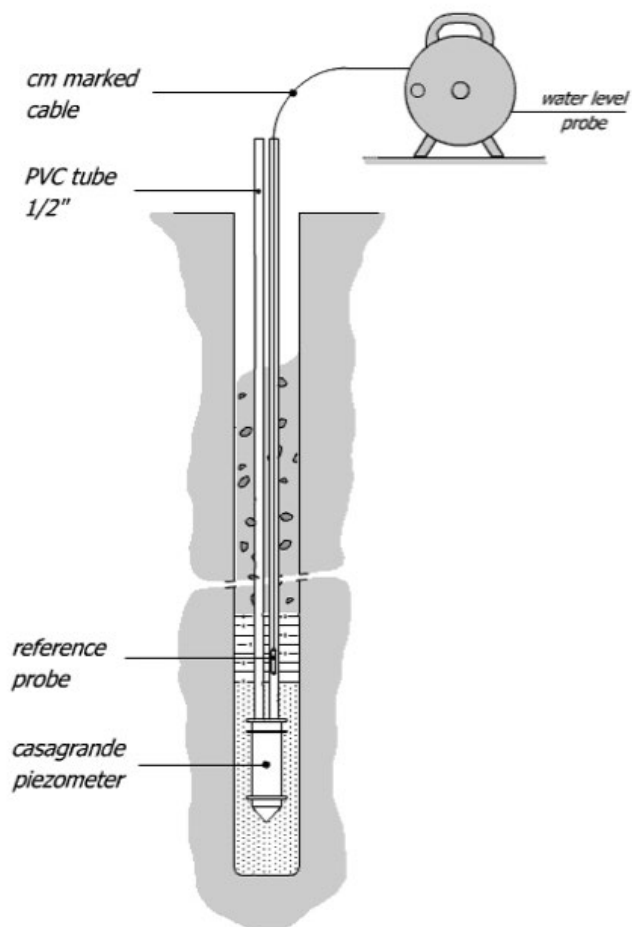
Applications

Underground water level measurement.



LV620

Water level meter



Technical features

Model	LV620-01-MT*	LV620-02-MT*
Tip		
Material	Stainless steel / PVC	
Dimensions	Ø12 x 150mm	
Cable	Centimeter	Millimeter
Type	Round	Flat
Conductors number	4 + anima in kevlar	2
External sheath	Transparent polyurethane	Transparent polyurethane
Dimensions	Ø4.7mm	10x1mm
Available	50-100-150-200-300	50-100-150
Cable reel		
LV620-RL-01 (fino a 100mt)		
Material	Thermoplastic tambour and steel trestle	
Accuracy	Reel (width)	Ø320 mm
	Total height	Ø420 mm
	Depth	Ø222 mm
Cable reel		
LV620-RL-01 (with wheels)		
Material	Thermoplastic tambour and steel trestle	
Accuracy	Reel	Ø420 mm
	Width	Ø480 mm
	Total height	Ø860 mm
	Depth	Ø400 mm
Accessories		
Temperature sensor	LV620-TM	
9V 1200mA battery	LV620-BV	
Electronic board with acoustic and visual signal	LV620-EL	
Digital display (temperature)	LV620-ELTM	